

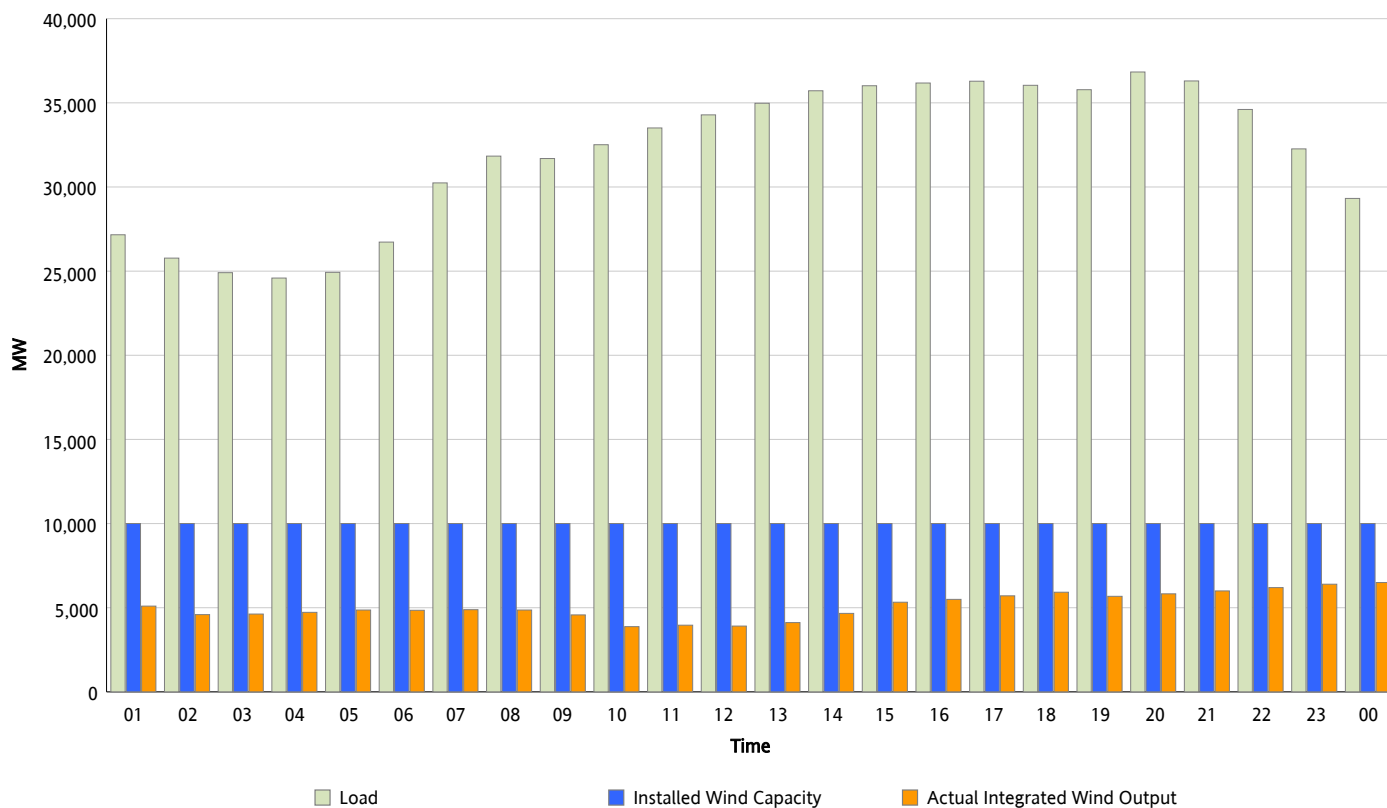


ERCOT Grid Operations

Wind Integration Report : 10/16/2012

Peak Load	36,835 MW
Load Peak Hour (HE)	20
Wind Over Peak	5,824 MW
Wind Record 06/19/12	8,368 MW
Max Wind Value*	6,578 MW
Wind Peak Time	23:25
Wind Integration %	22.21 %

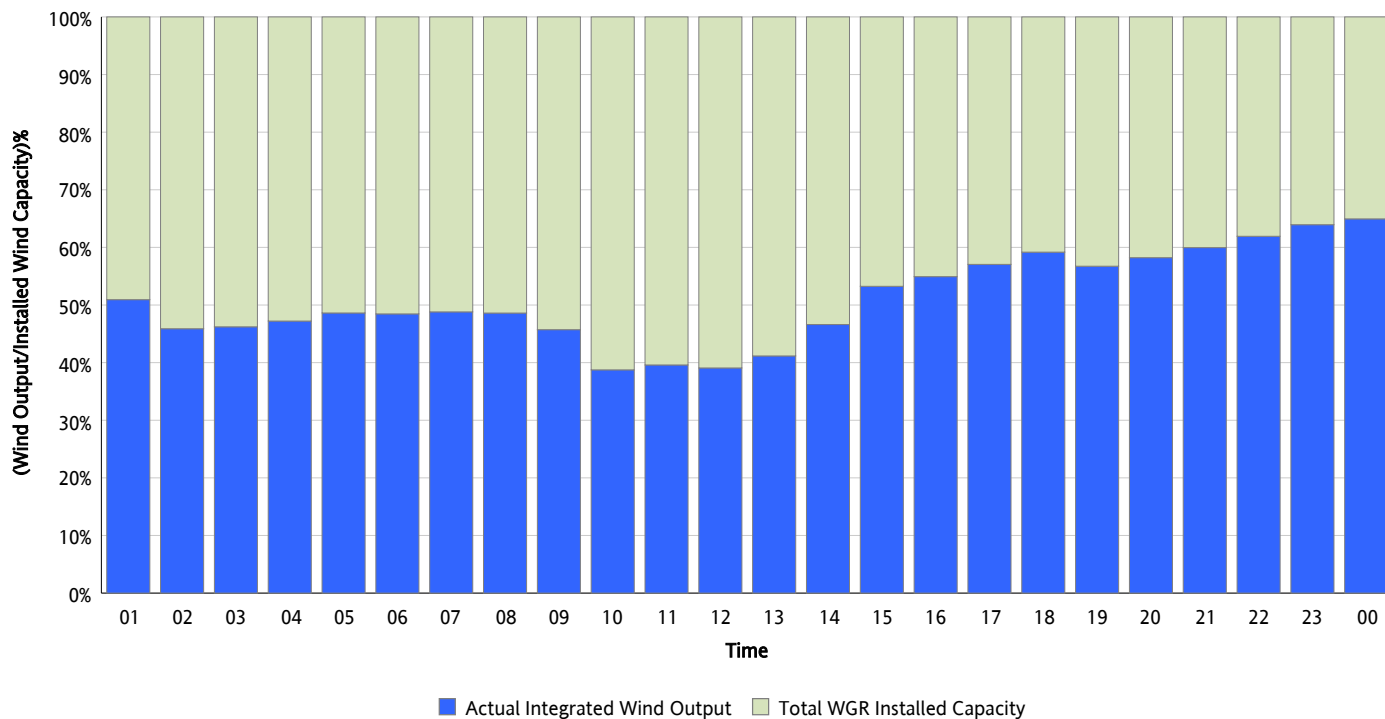
Hourly Average Actual Load vs. Actual Wind Output
10/16/2012



** Wind Record and Wind Max represent instantaneous values and the rest of the values are integrated over the hour*

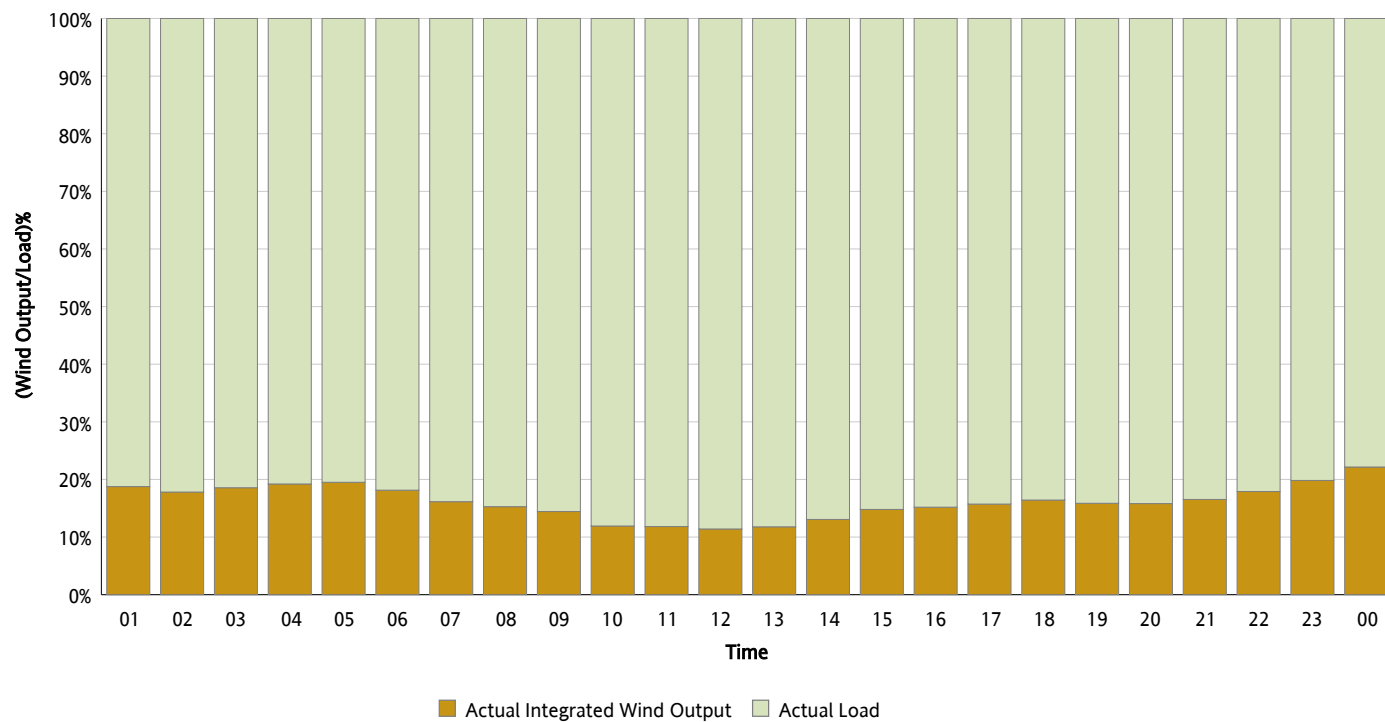
Actual Wind Output as a Percentage of the Total Installed Wind Capacity

10/16/2012



Actual Wind Output as a Percentage of the ERCOT Load

10/16/2012



ERCOT Load vs. Actual Wind Output

10/09/2012 - 10/16/2012

